

Installation Instructions:

Ensure within aperture is clean and free of debris, loose cement, and remove all dust from surfaces requiring installation.

Detail A- Single FB750 Intubatt up to 120 integrity, 60 Insulation

1. Cut FB750 Intubatt to tightly fit into aperture.
2. Coat FB750 Intubatt edges and fit into opening at required position.

Detail B- Single FB750 Intubatt Patress, rated as Detail A

1. Cut FB50 Intubatt to required size and shape, ensuring the FB750 Intubatt will overlap the concrete floor a minimum of 75mm around the opening.
2. Apply FS702 Intumastic to concrete where the FB750 Intubatt is to be fitted, to bond FB750 Intubatt to concrete.
3. Firmly press FB750 Intubatt to concrete to ensure bond.
4. Fix the FB750 Intubatt to the concrete using minimum 75mm long steel screws and 25mm diameter steel washers. Fixings should not exceed 50mm from any edge and not exceeding 200mm centres.

Detail C- Double FB750 Intubatt rated up to 120 integrity and insulation.

1. Apply “detail A” instructions from both layers.
2. Bond the two layers together with FS702 Intumastic prior to installing second layer.

Detail D - Double FB750 Intubatt Single layer patress rated up to 120 integrity and insulation.

1. Apply “Detail A” instructions for first layer and fit flush with the required face of floor.
2. Apply “detail B” instructions for second layer.
3. Bond the two layers together with FS702 Intumastic prior to installing second layer.

Detail E - Double FB750 Intubatt rated up to 120 integrity, 60 insulation.

1. Cut 20mm x 45mm softwood timber battens and fix to sides of concrete aperture using suitable steel fixings at 300mm centres, not exceeding 50mm from each end/cut.
2. Cut the FB750 Intubatt to the correct size, a tight fit is not required, tested with a loose fitting FB750 Intubatt.
3. Fix the FB750 Intubatt to the timber battens using minimum 75mm long steel screws and 25mm diameter steel washers, fixings should not exceed 50mm from any edge and not exceeding 300mm centres.

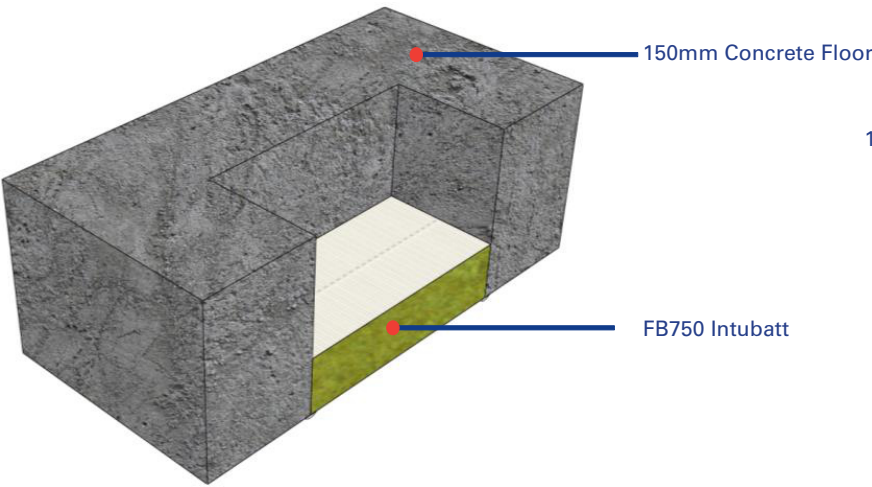
Detail F - Double FB750 Intubatt patress up to 120 integrity and Insulation.

1. Apply “Detail B” instructions for both layers.
2. Ensure fixings are a minimum of 130mm long for second layer.
3. Bond the two layers together with FS702 Intumastic prior to installing second layer.

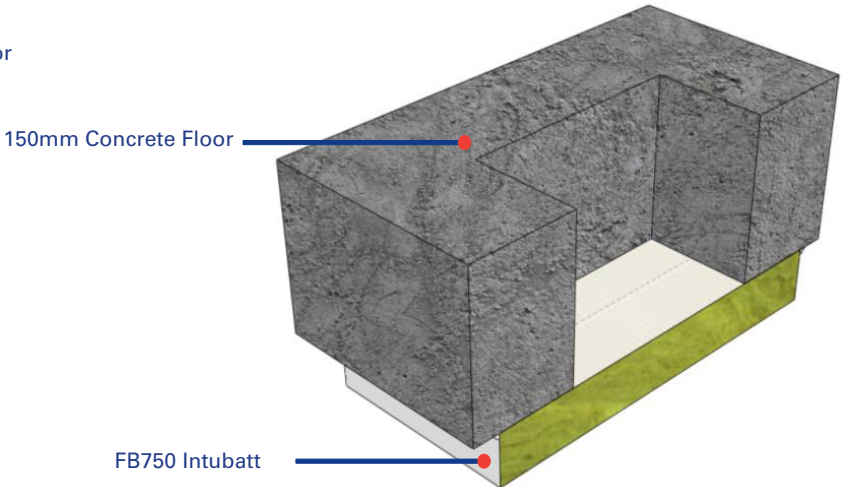
General

1. Coat all joints, exposed edges of FB750 Intubatt and damages to coating with FS702 Intumastic brush grade.
2. Apply FS702 Intumastic bead to all FB750 Intubatt interfaces/ joints.

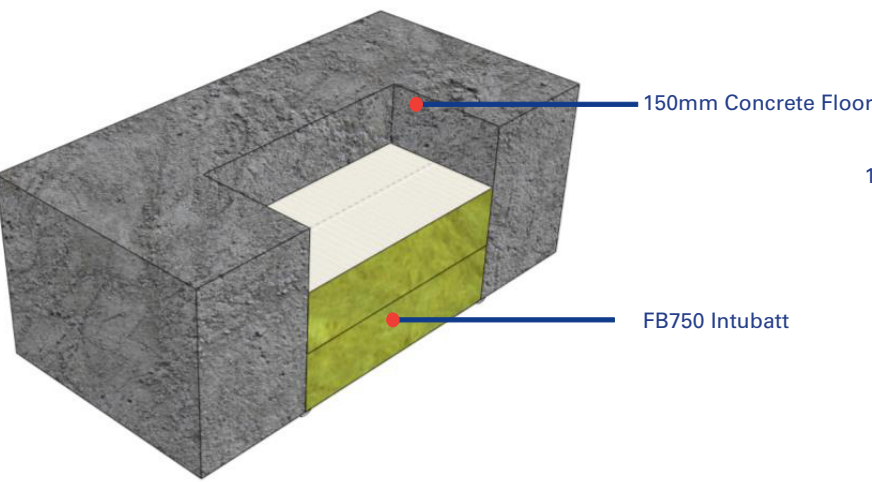
Detail A



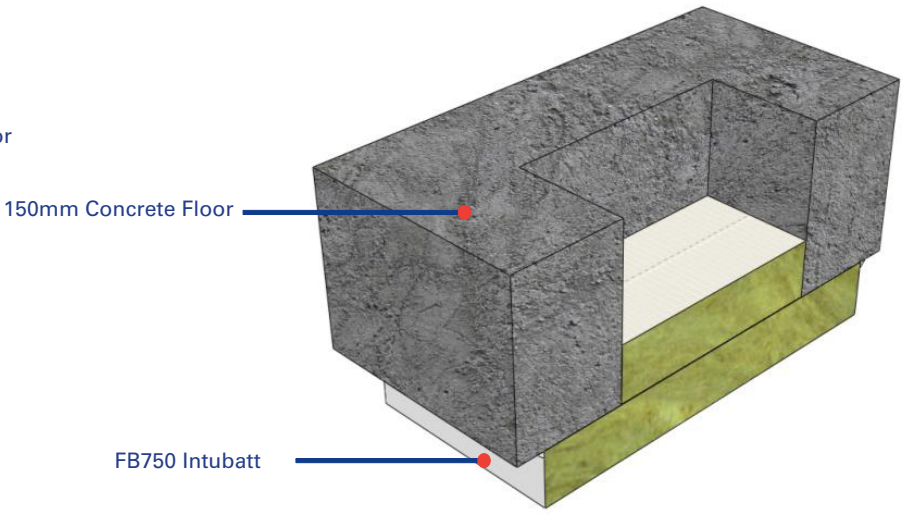
Detail B



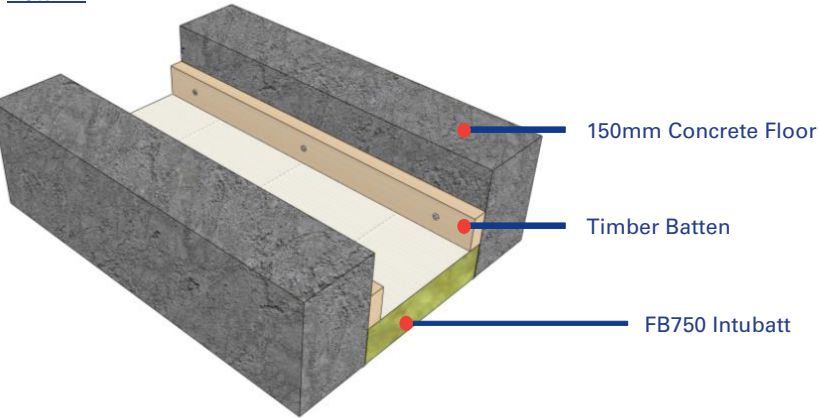
Detail C



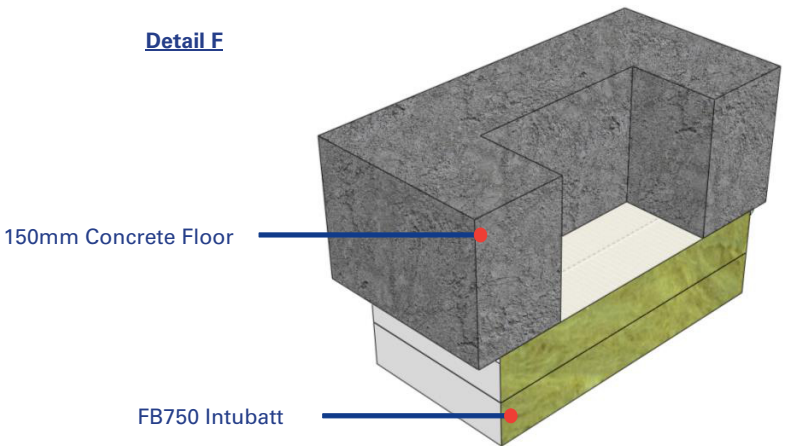
Detail D



Detail E



Detail F



Test Information:

Test: BSEN 1366 / BS 476

Products:

FB750 Intubatt & FS702 Intumastic

Scenario:

Penetration through concrete / blockwork wall construction.

Penetrations:

Various penetrations tested, see drawings TBC for specific installation guidelines.

Void Size:

1190mm x unlimited length above FB750 Intubatt length 1200 framework required.

Fire Resistance:

Tested up to 120 minutes.  
Please see specific detail for fire rating. Fire ratings contained herein are based upon plain seals only,

Acoustic:

Test: BRE 224463  
FB750 Intubatt 1, Two Layers  
Void 1.0m2 59dB

Test: BM Trada Z/12017  
FB750 Intubatt 2 One Layer  
Void 0.6m2 36dB

FB750 Intubatt 2 Two Layer  
Void 0.3m2 57dB  
Void 0.6m2 50dB

Nullifire details will only perform to the substrates performance capabilities. This applies to fire and acoustic. It is the responsibility of the purchaser to ensure suitability. If in doubt call technical.

Drawing Title:

Openings within concrete floor construction FB750 Intubatt

Drawing Reference No:

PS-003

A3